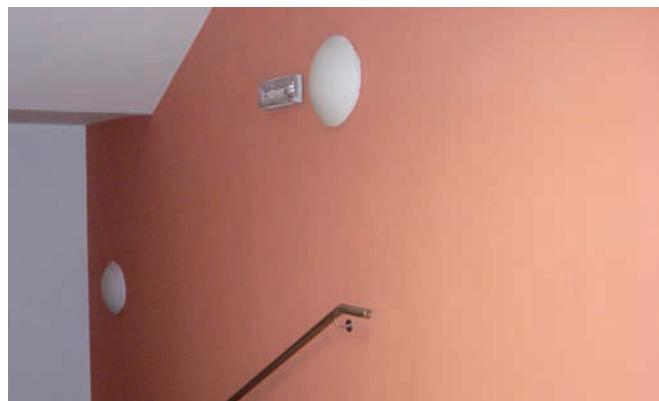
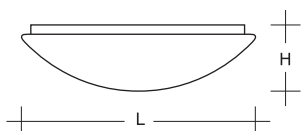
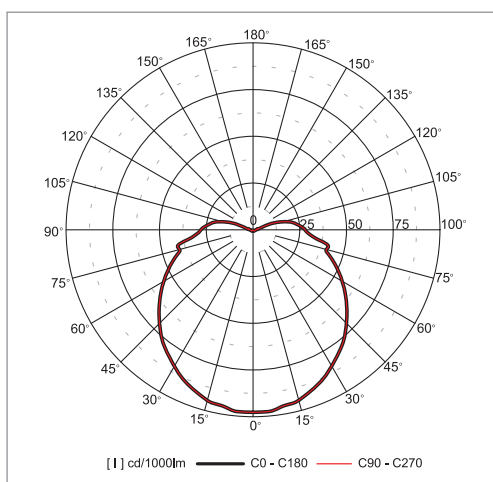


Castelo LED

Ceiling and wall-mounted LED luminaires



Material:

- body: a steel sheet finished by powder technology varnishing
- color: white RAL 9003
- diffuser: opal glass cover

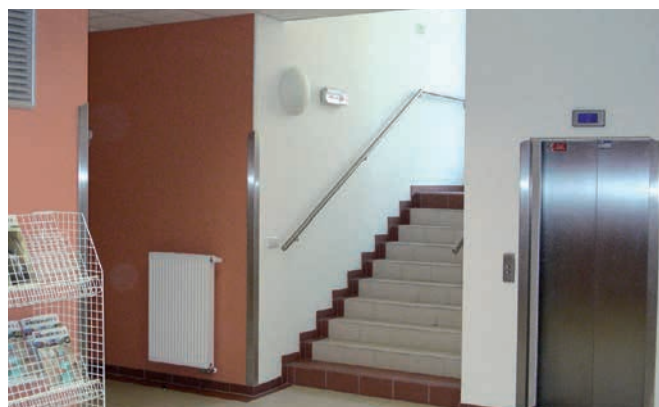
Degree of protection: IP40, IP44

Rated voltage: 230 V/50 Hz

Control gear: LED driver, the luminaires are offered also in emergency version (only for A24-10075 and A24-10076)

Mounting: surfaced mounting on ceiling or wall

Application: reception desks, entry halls, corridors and stairways, lobby-rooms



Power* W	Code	IP	Absorption W	Lum. flux (lm)	lm/W	Color temp. K	Ra	ØL × H (mm)	Kg
1×26	A24-10074B	40	16	1 060	67	3 000	>80	310 × 120	2.0
1×26	A24-10074E	40	16	1 170	73	5 600	>80	310 × 120	2.0
2×18	A24-10075B	44	20	1 580	79	3 000	>80	360 × 125	3.0
2×18	A24-10075C	44	20	1 780	89	4 000	>80	360 × 125	3.0
2×26	A24-10076B	44	26	2 080	80	3 000	>80	420 × 125	4.0
2×26	A24-10076C	44	26	2 320	89	4 000	>80	420 × 125	4.0

* Indicative power just for fluorescent fixtures comparison purpose

The following coding applies only for version A24-10075 and A24-10076, example: A24-10075BLG or A24-10076CAT

Order code with suffix AT: Luminaire for emergency lighting system AUTOTEST with its own battery

Order code with suffix LG: Luminaire for emergency lighting system LOGICA with its own battery

Order code with suffix S: Luminaire with HF ballast with monitoring module, manual coding

Order code with suffix A: Luminaire with HF ballast with monitoring module, automatic coding

Order code with suffix N: Luminaire with HF ballast suitable for LOGICA-NEA emergency lighting systems for CBS