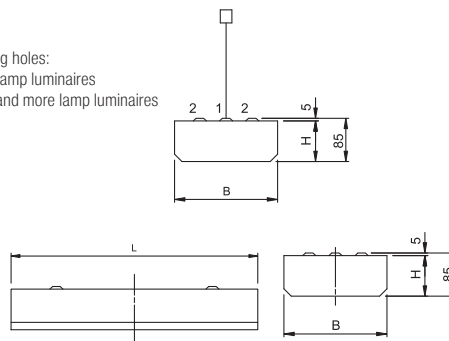


Ceiling and suspended luminaires - separate

Mounting holes:
1 - one lamp luminaires
2 - two and more lamp luminaires



Material:

- body: a steel sheet finished by powder technology varnishing
- color: white RAL 9003
- louvre: highly polished or matted double parabolic louvre made of aluminium sheet; polished or matted christmas tree louvre; white louvre
- cover: prismatic or opaline

Degree of protection: IP 20

Rated voltage: 230V/50Hz

Control gear: low loss ballast or electronic ballast, dimmable ballast on request; the luminaires are offered also in emergency version

Mounting: separate mounting on a ceiling; on wire and tube pendants

Accessories: wire and tube pendants (must be ordered separately)

Application: reception desks, corridors, shops, counters

pendants for one lamp luminaires

length(mm)	without a cable	with a cable 3x1,5mm ²	with a cable 5x1,5mm ²
1200 (wires)	99-080/120	99-081/120	99-082/120
400 (tubes)	99-090/040	99-091/040	99-092/040
600 (tubes)	99-090/060	99-091/060	99-092/060
900 (tubes)	99-090/090	99-091/090	99-092/090
1200 (tubes)	99-090/120	99-091/120	99-092/120

pendants for two lamp luminaires

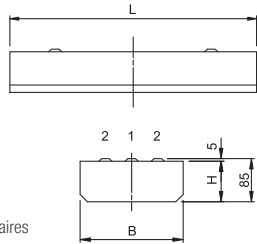
length(mm)	without a cable	with a cable 3x1,5mm ²	with a cable 5x1,5mm ²
1200 (wires)	99-083/120	99-084/120	99-085/120
400 (tubes)	99-093/040	99-094/040	99-095/040
600 (tubes)	99-093/060	99-094/060	99-095/060
900 (tubes)	99-093/090	99-094/090	99-095/090
1200 (tubes)	99-093/120	99-094/120	99-095/120

Code	Power	Louvre	Lamp	Cap	LxBxH (mm)	Kg
11-013/118/ [1][2]	1x18W	A,B,C,D,J,X,Z	T8 lamp	G13	638x207x80	2,7
11-013/136/ [1][2]	1x36W	A,B,C,D,J,X,Z	T8 lamp	G13	1248x207x80	4,5
11-013/158/ [1][2]	1x58W	A,B,C,D,J,X,Z	T8 lamp	G13	1548x207x80	5,4
11-013/218/ [1][2]	2x18W	A,B,C,D,J,X,Z	T8 lamp	G13	638x336x80	3,3
11-013/236/ [1][2]	2x36W	A,B,C,D,J,X,Z	T8 lamp	G13	1248x336x80	6,8
11-013/258/ [1][2]	2x58W	A,B,C,D,J,X,Z	T8 lamp	G13	1548x336x80	7,9
11-013/318/ [1][2]	3x18W	A,B,C,D,J,X,Z	T8 lamp	G13	638x490x80	4,9
11-013/336/ [1][2]	3x36W	A,B,C,D,J,X,Z	T8 lamp	G13	1248x490x80	8,0
11-013/358/ [1][2]	3x58W	A,B,C,D,J,X,Z	T8 lamp	G13	1548x490x80	10,1
11-013/418/ [1][2]	4x18W	A,B,C,D,J,X,Z	T8 lamp	G13	638x632x80	5,7
11-013/436/ [1][2]	4x36W	A,B,C,D,J,X,Z	T8 lamp	G13	1248x632x80	10,4
11-013/458/ [1][2]	4x58W	A,B,C,D,J,X,Z	T8 lamp	G13	1548x632x80	13,5

[1] - E (low loss ballast) - C (electronic ballast)

[2] - A (white louvre) - B (highly polished parab. louvre, 60°) - C (matted parabolic louvre, 60°)
- D (polished christmas tree louvre) - J (matted christmas tree louvre) - X (prismatic cover)
- Z (opaline cover)

Ceiling luminaires with compact fl. lamps



Mounting holes:

1 - one lamp luminaires

2 - two and more lamp luminaires

**Material:**

- body: a steel sheet finished by powder technology varnishing
- color: white RAL 9003
- louvre: highly polished or matted double parabolic louvre made of aluminium sheet; polished or matted christmas tree louvre

Degree of protection: IP 20

Rated voltage: 230V/50Hz

Control gear: low loss ballast or electronic ballast, dimmable ballast by request;
the luminaires are offered also in emergency version

Mounting: separate mounting on a ceiling

Application: corridors, shops, counters, computer labs, cafeterias

Code	Power	Louvre	Lamp	Cap	LxBxH (mm)	Kg
11-014/236/ ¹ ₂	2x36W	B,C,D,J	compact fl. lamp	2G11	480x336x80	3,0
11-014/255/C ²	2x55W	B,C,D,J	compact fl. lamp	2G11	600x336x80	3,1
11-014/336/ ¹ ₂	3x36W	B,C,D,J	compact fl. lamp	2G11	480x492x80	4,5
11-014/355/C ²	3x55W	B,C,D,J	compact fl. lamp	2G11	600x492x80	4,6

¹ - E (low loss ballast)
- C (electronic ballast)

² - B (highly polished parab. louvre, 60°)
- C (matted parabolic louvre, 60°)
- D (polished christmas tree louvre)
- J (matted christmas tree louvre)