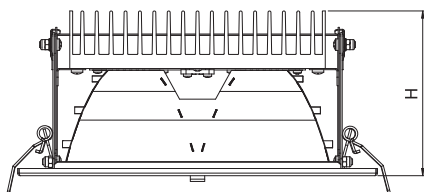
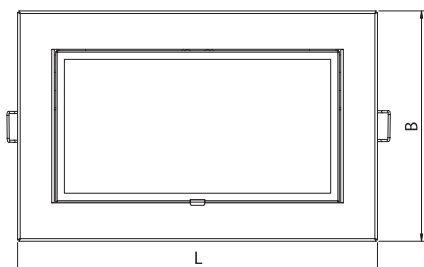


# Wallwasher LED

Recessed LED luminaires – mounting in plaster ceiling



## Material:

- body: steel sheet finished by powder technology varnishing
- color: white RAL 9003
- reflector: symmetric aluminum sheet
- diffuser: tempered glass 3 mm

**Ambient temperature:** -20 ÷ 40°C

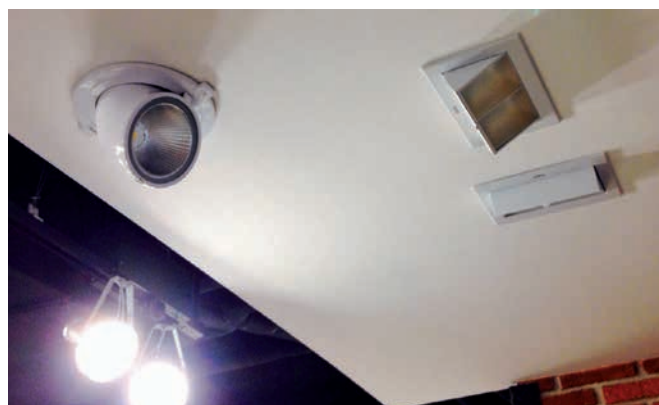
**Degree of protection:** IP20 (body in ceiling module) / IP40 (frame to the fixture)

**Rated voltage:** 230 V/50 Hz

**Control gear:** LED driver

**Mounting:** recessed into plaster ceiling

**Application:** lighting for boutiques, shops, fashion saloons, hotels and restaurants



Power* W	Code	Article	Absorption W	Lum. flux (lm)	lm/W	Color temp. K	Ra	L × B × H (mm)	Kg
1×35	101206201	Wall Washer OR LED 20W SY 3K40	31	2 100	68	3 000	85	250 × 160 × 114	2.8
1×70	101206200	Wall Washer OR LED 40W SY 3K40	43	3 800	88	3 000	85	250 × 160 × 114	2.9

\* Indicative power just for comparison purpose with high pressure lamps.