

Gli **Spot** a bassa tensione possono essere applicati al binario a bassa tensione Light Kit ELV oppure a parete e soffitto. Disponibili differenti lunghezze di tige.

Per applicare gli **Spot** al binario a bassa tensione Light Kit ELV, si deve ordinare separatamente l'adattatore con l'attacco a **Jack** codice 6601-00. Il sistema **Jack** garantisce flessibilità e intercambiabilità dei corpi illuminanti a impianto effettuato, rapidità e affidabilità negli interventi di manutenzione e direzionalità a 360°.

È possibile applicare gli **Spot** su soffitti, controsoffitti o su parete utilizzando gli specifici accessori.

The **low voltage spotlights** can be applied directly to the Light Kit ELV low voltage track, using the **Jack** adapter designed for the purpose or to the wall and ceiling. Different pipe lengths are available.

To apply low-voltage spotlights with pipe to the low voltage Light Kit ELV track, the **Jack** adapter must be ordered separately (code 6601-00). The **Jack** system guarantees flexibility and interchangeability of the spotlights once the installation is done, as well as a quick and reliable maintenance and 360° orientation.

The spotlights can be mounted on the ceiling, in false ceilings or on the wall using specific accessories.

■ Corpo in pressofusione di alluminio verniciato poliestere
Asta in acciaio inox

■ Die-cast aluminium body, polyester painted
Stainless steel pipe

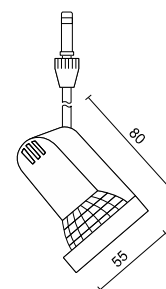


SPOT 123



Codice Code	Lampada Lamp	Attacco Base	Tige (cm)	kg
6123-07	HR 50W/LED MR16 4W	GU5.3	7	0,07
6123-10	HR 50W/LED MR16 4W	GU5.3	10	0,07
6123-20	HR 50W/LED MR16 4W	GU5.3	25	0,08

31 Bianco White
30 Nero Black
20 Metal Silver

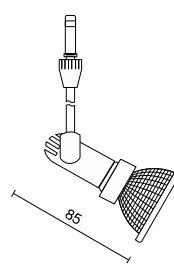


SPOT 124

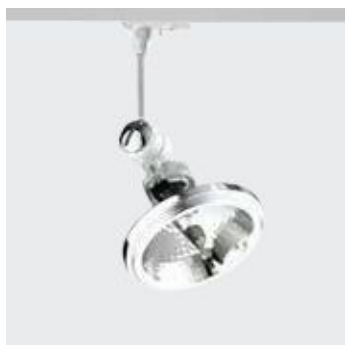


Codice Code	Lampada Lamp	Attacco Base	Tige (cm)	kg
6124-10	HR 50W/LED MR16 4W	GU5.3	10	0,05
6124-20	HR 50W/LED MR16 4W	GU5.3	25	0,08

31 Bianco White
30 Nero Black

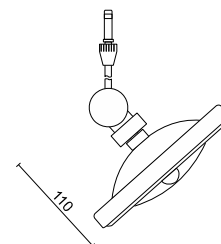
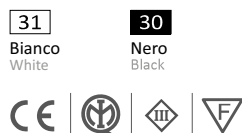


SPOT 55RH



Codice Code	Lampada Lamp	Watt	Attacco Base	Tige (cm)	
-------------	--------------	------	--------------	-----------	---

6202-07	HM (R111)	50	G53	7	0,10
6202-10	HM (R111)	50	G53	10	0,11

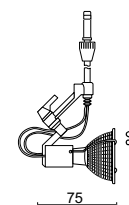
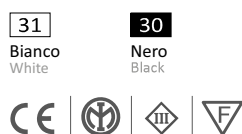


SPOT 45



Codice Code	Lampada Lamp	Attacco Base	Tige (cm)	
-------------	--------------	--------------	-----------	---

6101-10	HR 50W/LED MR16 4W	GU5.3	10	0,05
---------	--------------------	-------	----	------

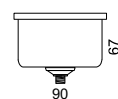


ACCESSORI ACCESSORIES

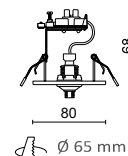
6601-01 Adattatore con attacco a Jack 12V - 5A
Jack adapter 12V - 5A



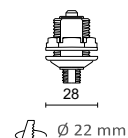
6651-10 Rosone con trasformatore toroidale 50 Watt 230/12V. Presa Jack
Ceiling base with 50 Watt toroidal transformer 230/12V. Jack plug



6613-13 Rosone a incasso. Presa Jack 12V - 5A
Recessed base. 12V - 5A Jack connection



6611-00 Connettore con presa Jack 12V - 5A per controsoffitti a doghe
Jack connector 12V - 5A for slatted false-ceilings



30 Nero Black
31 Bianco White