

CONCRETE FOUNDATIONS

Application:

- buried concrete footings are used as foundations for lighting columns

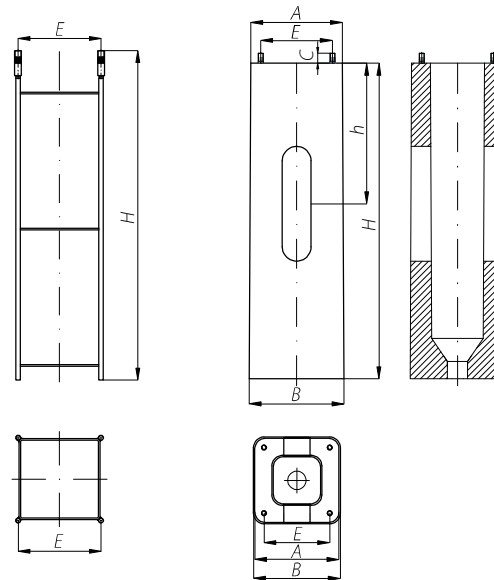
Technical information:

- concrete class C25/30 according standard EN 206-1,
- steel reinforcement basket,
- screws spigot endings hot galvanized,
- concrete footings for aluminium columns and masts are supplied with thermo-shrinkable sleeves installed on the screws endings, what protects against corrosion on screw,
- side holes and vertical hole to provide power cables,
- surface is covered with an impregnate agent (certified asphalted anion emulsion),
- square section (aluminium columns and masts as well pole SP-5W and SP-31W) or round (plastic coated poles).

Advantages:

- single-element construction makes easy foundation of products in the ground,
- fast and easy assembly with no seasoning required,
- high quality due to the semi-automatic computer-controlled production line using the method of vibropressing.

All concrete footings comply with standard EN 14991:2007 and have Certificate of Factory Production Control 1488-CPD-0208/Z.



Concrete footings and reinforcement baskets in street lighting.

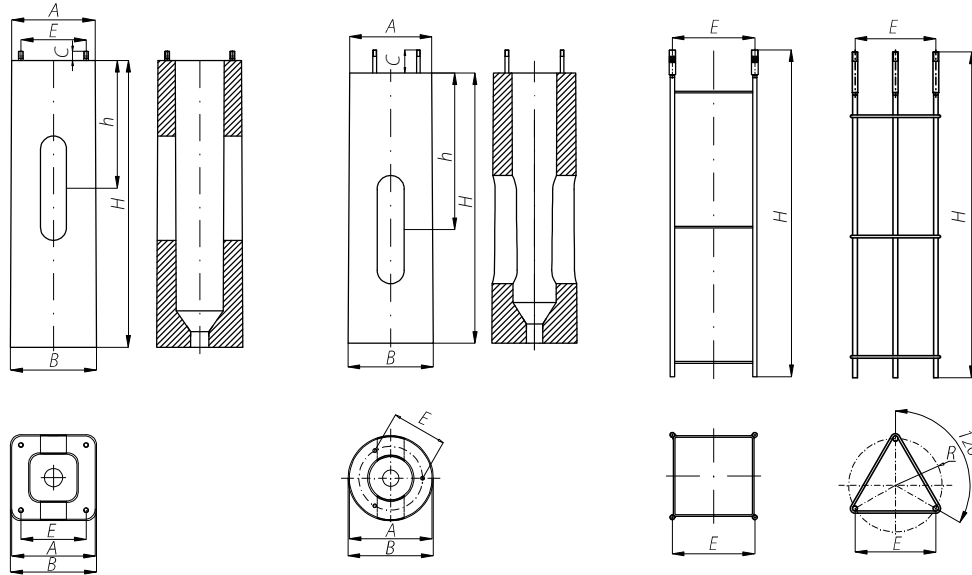
Type of concrete footing	B-60	B-70	B-71	B-80
Code	311160	311170	311171	311180
Shape	square			
Size A x B x H [mm]	320 x 330 x 1000	400 x 410 x 1200	400 x 410 x 1000	400 x 430 x 1500
Bolts spacing E [mm]	250	300	300	300
Height of pin [mm]	35	45	45	50
Connection elements	4008/40009	4012/1013	4012/4013	4012

Type of reinforcement basket	Z-60	Z-70	Z-71	Z-80
Code	311206	311207	311271	311208
Shape	square			
Height H [mm]	985	1190	965	1500
Connection elements	4008/4009	4012/4013	4012/4013	4012

Application	SALØ146	SALØ176, SAL Ø178K, SALØ180M	SALØ146H, SALØ176, SAL Ø178K, SALØ180M	MALØ225



ADDITIONAL ELEMENTS



Application:

- buried concrete filled reinforcement baskets are used as foundations for lighting columns

Technical information:

- steel reinforcement basket,
- oxide paint as a protection against corrosion resistant,
- screws spigot endings hot galvanized,
- in reinforcement baskets for aluminium columns and masts are used thermo-shrinkable sleeves put on the screws endings in place of base plate deposition, what protects against corrosion on screw,
- square section (aluminium columns and masts as well pole SP-5W and SP-31W) or triangle (plastic coated poles).

Advantages:

- light weight facilitates transport
- for installation on customer footings

ADDITIONAL ELEMENTS

- stainless washer, hot galvanized nut or hot galvanized ripable nut are the connection elements sets available for columns SAL, MAL.
- stainless washer, hot galvanized nut, rubber cover plate for poles type S, SP, SM.

The manufacturer recommends using original concrete footings, reinforcement baskets and connection elements guarantee stability and safety of whole construction.

Concrete footings and reinforcement baskets in park lighting.

Type of concrete footing	B-20	B-30	B-40	B-40B	B-50	B-51A	B-51	B-60	B-60T	B-71T
Code	311120	311130	311140	311140B	311150	311151A	311151	311160	311160T	311171T
Shape	round				square					
Size A x B x H [mm]	Ø250 x Ø255 x 700	Ø305 x Ø315 x 800	Ø305 x Ø315 x 1000	Ø305 x Ø315 x 800	240 x 255 x 900	260 x 275 x 1200	260 x 275 x 1000	320 x 330 x 1000	320 x 330 x 1000	400 x 410 x 1000
Bolt spacing E [mm]	190	236	236	236	180	200	200	250	250	300
Height of pin [mm]	50	85	85	85	30	35	35	35	90	110
Connection elements	311002	311003	311003	311003	4006 / 4007	4008 / 4009	4008 / 4009	4008 / 4009	4008 / 4009	4008 / 4009

Type of reinforcement basket	Z-20	Z-30	Z-40	Z-40B	Z-50	Z-51A	Z-51	Z-60	Z-60T	Z-71T
Code	311202	311203	311204	311204B	311205	311251A	311251	311206	311260T	311271T
Shape	triangle				square					
Height H [mm]	700	825	1025	935	870	1180	975	985	1060	1055
Connection elements	311002	311003	311003	311003	4006 / 4007	4008 / 4009	4008 / 4009	4008 / 4009	4008 / 4009	4008 / 4009

Application	S-13, S-23, SP-2	S-21, S-21W, S-22, S-30, S-30W, S-31, S-31W, S-32	S-52W, S-54W, SP-4, SP-4W, SM-1W, SM-2W, SM-3W	S-40, S-40W, SP-3, SP-3W	SALØ114/B60, SALØ120	SALØ114/D60, SALØ114/D75, SALØ120E, SALØ146G, SAL DECO-1, SAL DECO-2	SALØ114/D60, SALØ114/D75, SALØ120E	SALØ146	SP-31W	SP-5W