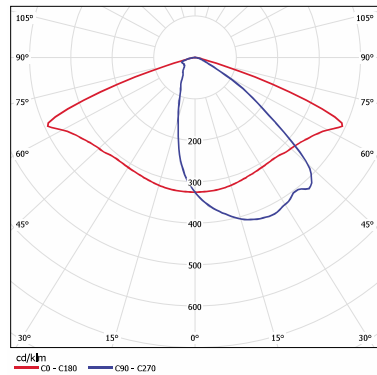
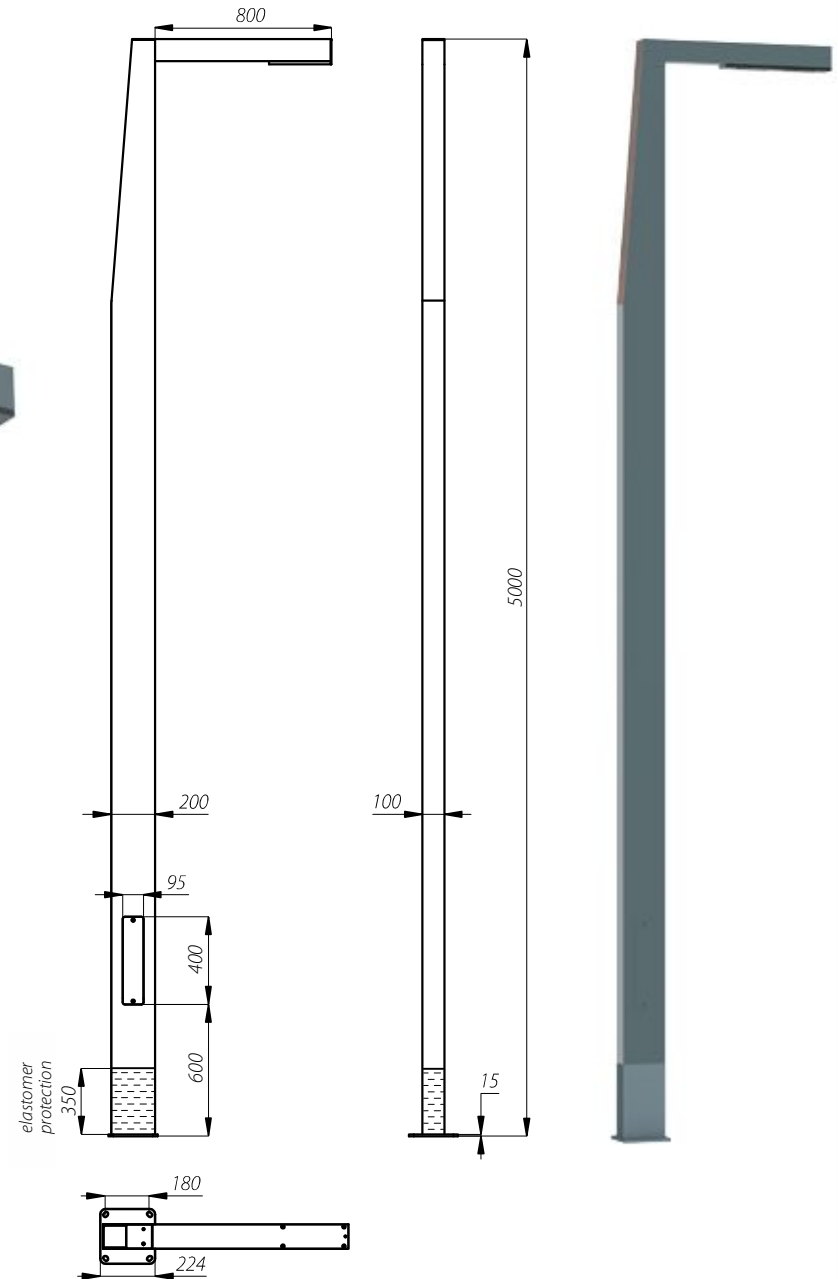
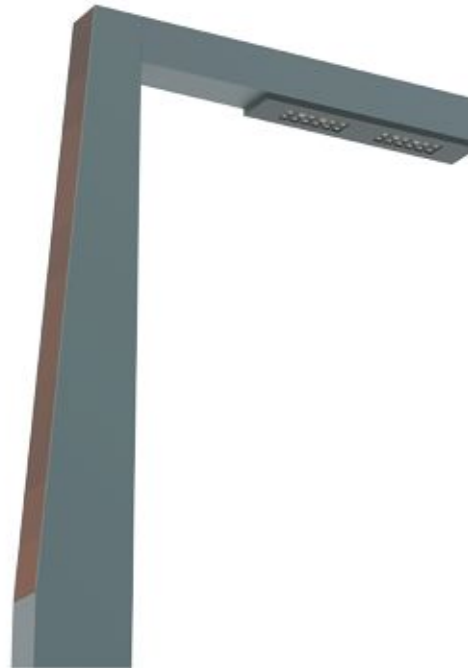


CORE LED

- **protection degree:** IP66 for the optical part and driver
- **insulation class:** II
- **supply voltage:** 220-240 V AC, 50/60 Hz
- **light source:** CREE XT-E
- **material:** anodised aluminium alloy
- **standard colour:** graphite/black
- decorative element made of exotic wood
- luminaire is adapted to work in temperatures between -40°C and +55°C



Light distribution curve for CORE LED



Name	The colour temperature of light [K]	Code	Power / Number of LEDs [W / pcs.]	Total power [W]	Luminous flux [lm]*	Lighting efficiency [lm/W]	Weight [kg]	Current product card
CORE LED 24	5 000	216530/6	24/12	31	2 300	74	B-50 / Z-70	
CORE LED 48	5 000	216533/6	48/24	55	4 550	83		

* due to the LED precision class the tolerance value is +/- 3%