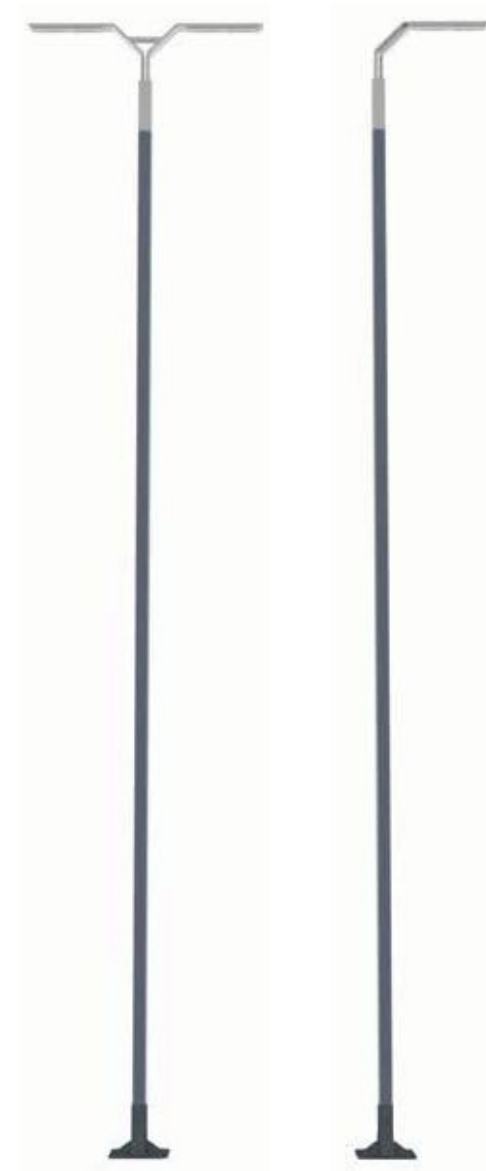


## GULLWING LED

- **protection degree:** IP66 for the optical part and driver
- **insulation class:** II
- **voltage:** 220-240 V AC, 50/60 Hz
- **light source:** CREE XP-L
- **material:** anodised aluminum alloy
- **colour:** graphite/inox (possibility of anodising in other colours)
- **recommended mounting height:** from 8 to 10 m in configuration on median (dividing roadway), depending on the optics
- luminaire is adapted to work in temperatures between -40°C and +55°C
- **optics:** optics available for the removable module can be found on page 18 of the catalogue



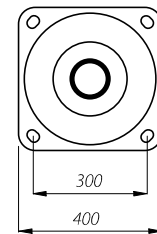
Name	Colour temperature [K]	Code	Power/LEDs amount [W/pcs]	Total power [W]	Luminous flux [lm]*	Luminous efficiency [lm/W]	Height H [m]	Length A [m]	Weight [kg]	Current product card
GULLWING LED 1 x 72	5 000	218135/6	72/24	80	9 750	122	8	0,8	50	
	3 500	218135/3			8 950	112				
GULLWING LED 1 x 108	5 000	218138/6	108/36	118	14 600	124	9	1,15	64	
	3 500	218138/3			13 450	114				
GULLWING LED 1 x 144	5 000	218141/6	144/48	154	19 500	127	10	1,36	72	
	3 500	218141/3			17 950	117				
GULLWING LED 2 x 72	5 000	218035/6	2 x 72/24	2 x 80	2 x 9 750	122	8	1,68	53	
	3 500	218035/3			2 x 8 950	112				
GULLWING LED 2 x 108	5 000	218038/6	2 x 108/36	2 x 118	2 x 14 600	124	9	2,37	68	
	3 500	218038/3			2 x 13 450	114				
GULLWING LED 2 x 144	5 000	218041/6	2 x 144/48	2 x 154	2 x 19 500	127	10	2,88	77	
	3 500	218041/3			2 x 17 950	117				

\*due to the precision class of diodes tolerance is +/-3%

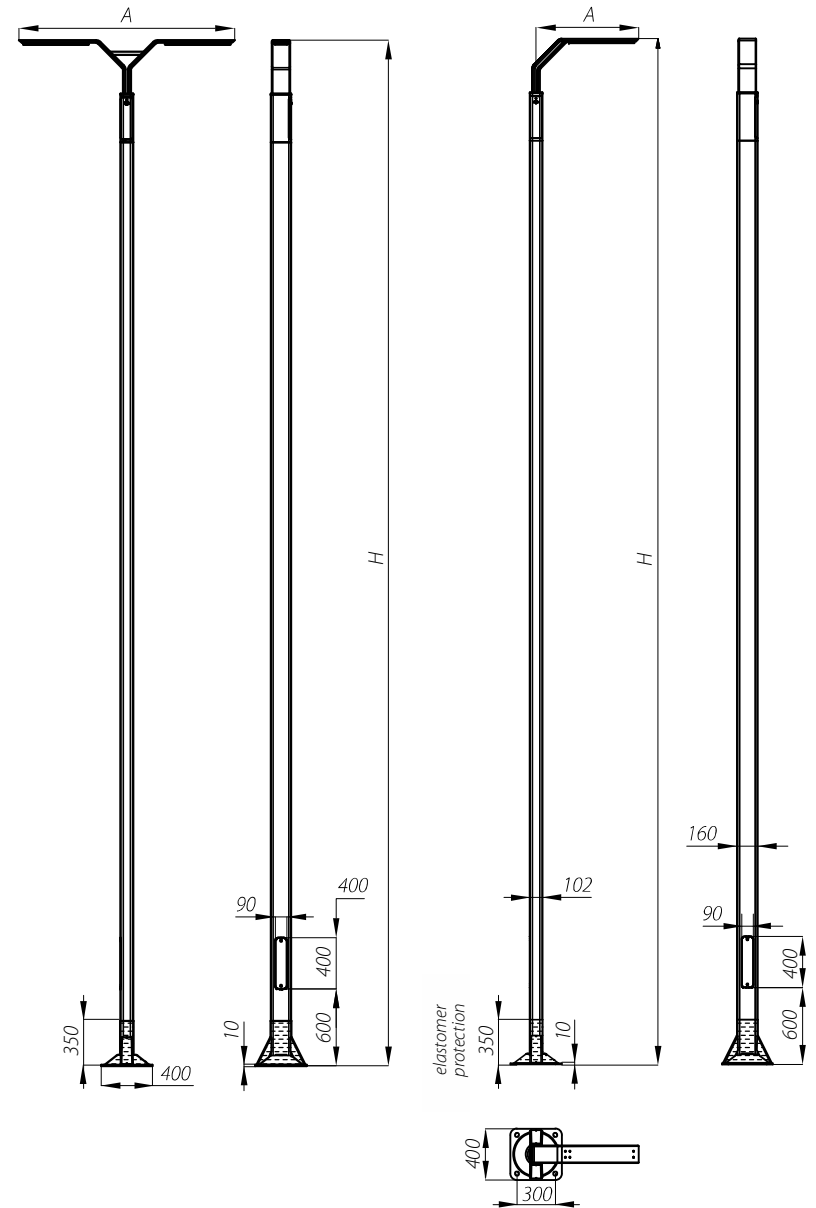
**GULLWING LED**



Goczałkowice-Zdrój / Poland



B-70/Z-70



STREET LIGHTING