

STREET LIGHTING/LIGHT MASTS

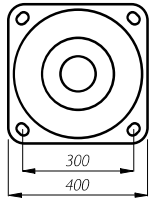
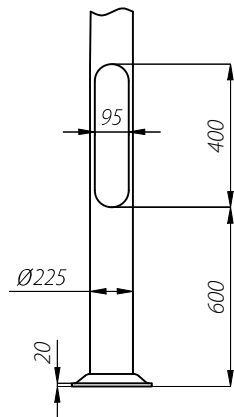
STRAIGHT LIGHT MASTS Ø225 MM

Columns with base plate

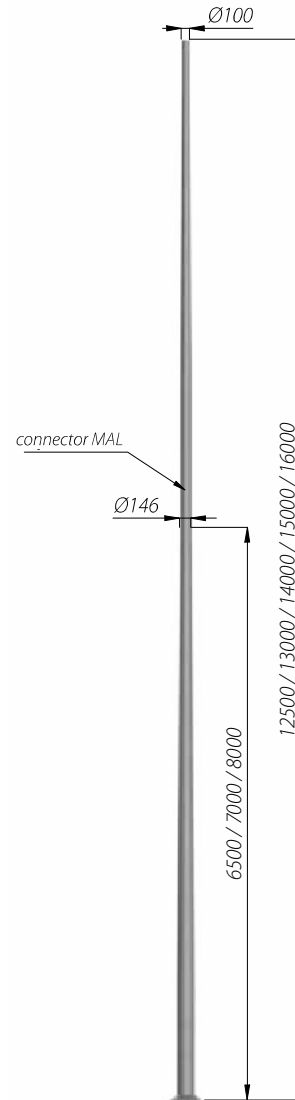
MAL-12,5	code: 42501/C...
MAL-13	code: 42502/C...
MAL-14	code: 42504/C...
MAL-15	code: 42506/C...
MAL-16	code: 42508/C...

Reinforced columns

MAL-12,5 wzm	code: 42551/C...
MAL-13 wzm	code: 42552/C...
MAL-14 wzm	code: 42554/C...
MAL-15 wzm	code: 42556/C...
MAL-16 wzm	code: 42558/C...

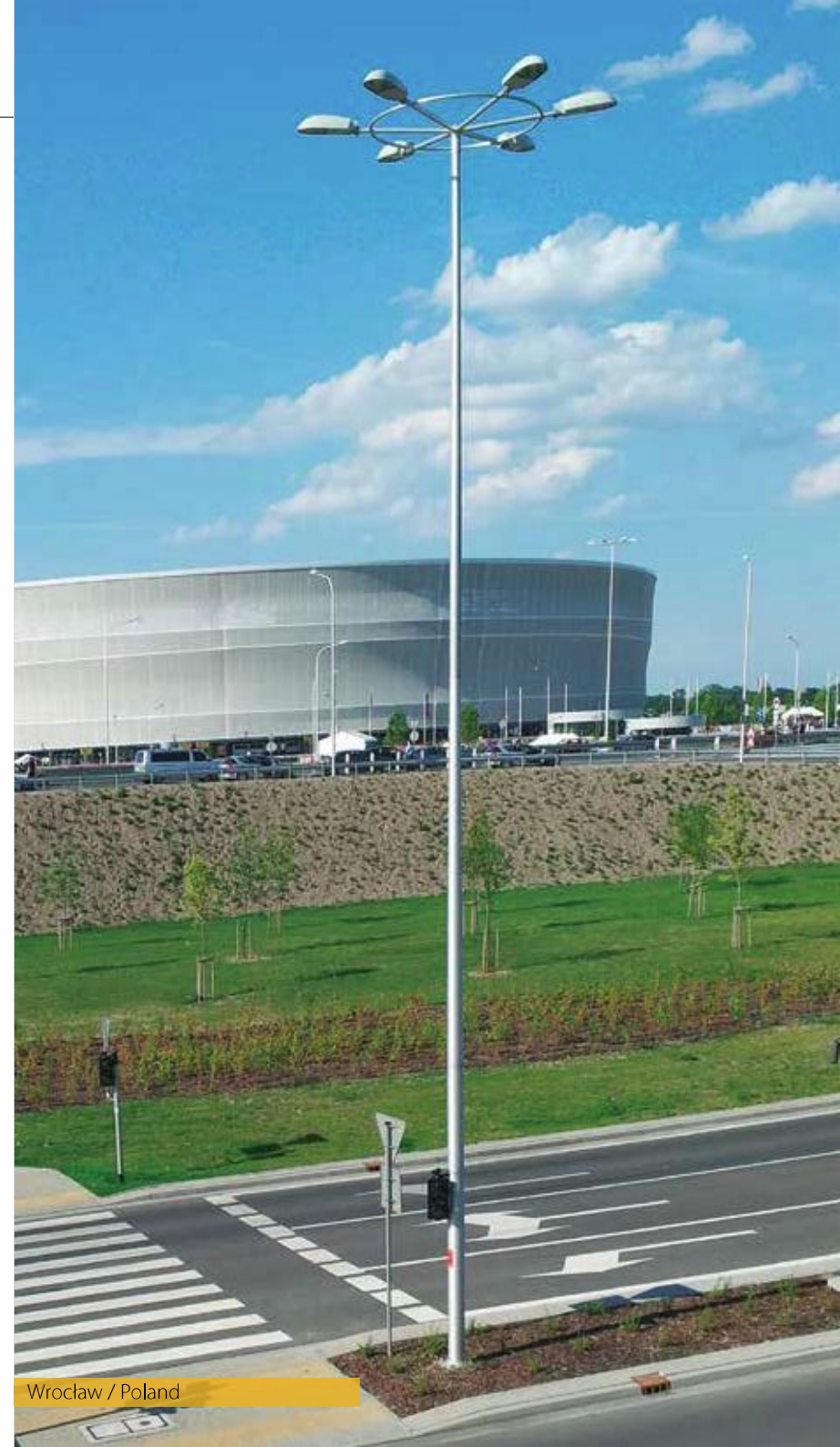


B-80/Z-80



MAL-...
MAL-... wzm*

* Reinforcement of the tube with a thickness of 5 mm, up to height of 1150 mm.
C... - choice of anodising colour



Wrocław / Poland