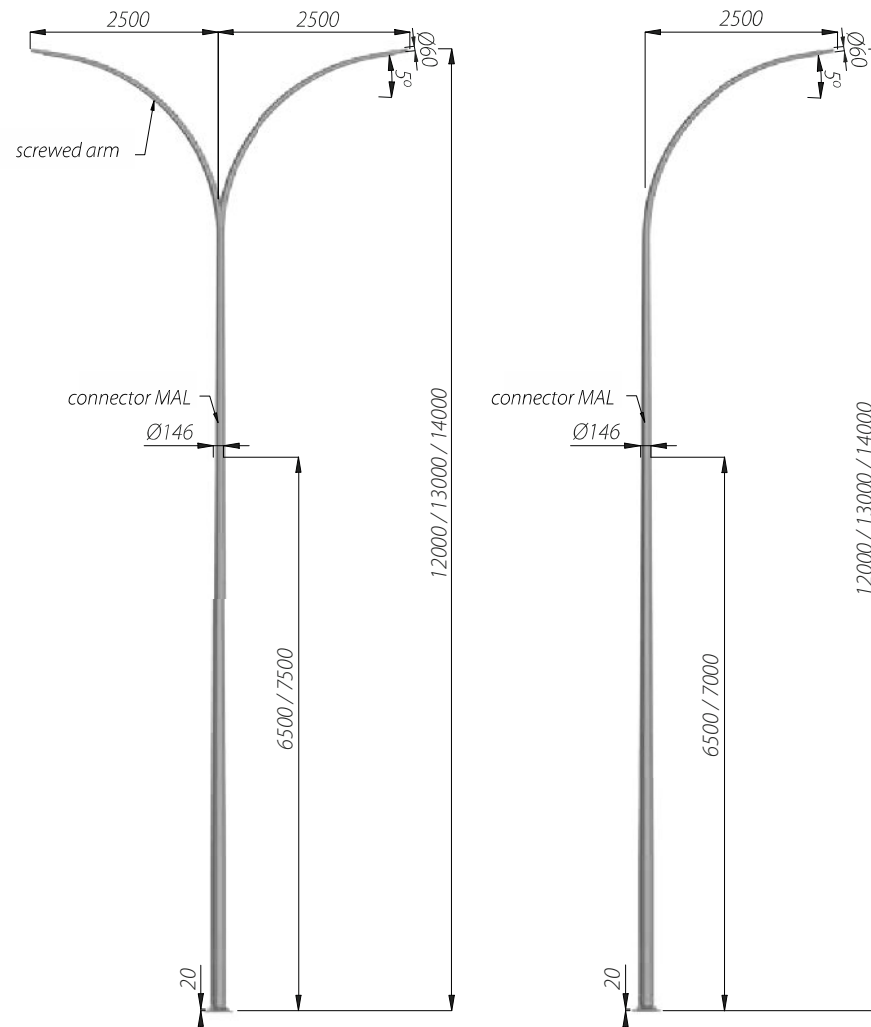
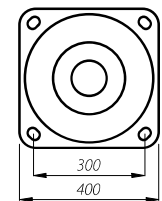
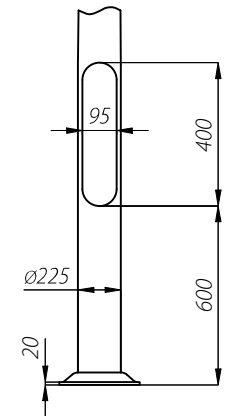


LIGHT MASTS WITH CURVED EXTENSION ARMS



Light masts

- MAL 12 WŁ 1/2,5/5,5/5 single** code: 42509/C...
- MAL 12 WŁ 2/2,5/5,5/5 double** code: 42510/C...
- MAL 13 WŁ 1/2,5/5,5/5 single** code: 42511/C...
- MAL 13 WŁ 2/2,5/5,5/5 double** code: 42512/C...
- MAL 14 WŁ 1/2,5/6,5/5 single** code: 42513/C...
- MAL 14 WŁ 2/2,5/6,5/5 double** code: 42514/C...



B-80/Z-80