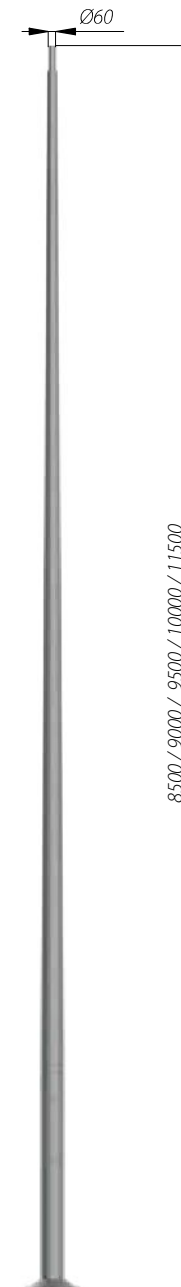


LOWERING AND RAISING COLUMNS MP

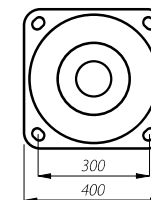
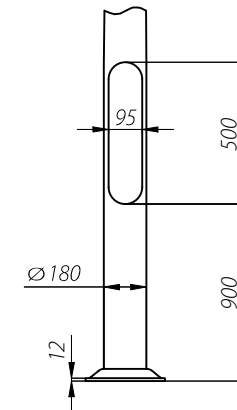
- column can be laid on two flat surface perpendicular to the column wiring chamber,
- lowering and raising the column using a special mechanism,
- two types of mechanisms for lowering and raising the columns: manual mechanism (consisting of two clamps located on column separation point) and articulated mechanism (with an additional transmission enabling operation using an electric drill),
- purchase of one mechanism (manual or articulated) is sufficient to handle all types of columns.



Column double clamp device SAL...M/P



- Columns with base plate
- SAL-85M/P** code: 42930/C...
 - SAL-90M/P** code: 42931/C...
 - SAL-95M/P** code: 42932/C...
 - SAL-100M/P** code: 42933/C...
 - SAL-115M/P** code: 42949/C...



B-70/Z-70

LOWERING AND RAISING COLUMNS M/P



Column diagram SAL-...M/P:

1. Mount mechanism (manual or articulated) on the column and double lock
2. Remove door of wiring chamber
3. Release 3 column securing bolts
4. Mount the drilling machine in mechanism
5. Lower of the column
6. Install/ maintain luminaire
7. Raise the column
8. Refit 3 column securing bolts
9. Refit column door
10. Remove double collar accessory